

Standard-documentation Meta information

(Definitions, comments, methods, quality)

on

EU-SILC 2020

This documentation is valid for the reference period:
2020 (income reference period 2019)

Status: **25.06.2021**



STATISTICS AUSTRIA
Bundesanstalt Statistik Österreich
A-1110 Vienna, Guglgasse 13
Phone: +43-1-71128-0
www.statistik.at

Directorate Social Statistics
Organizational unit Living Conditions, Social Protection

Contact person:
MMag. Thomas Glaser
Phone +43-1-71128-7039
E-Mail: thomas.glaser@statistik.gv.at

Contact person:
Mag. Richard Heuberger
Phone +43-1-71128-8285
E-Mail: richard.heuberger@statistik.gv.at

Executive Summary

EU-SILC (Statistics on Income and Living Conditions) is a statistic on income and living conditions of private households which is harmonized on European level. It is an important foundation of European social statistics. Main topics of EU-SILC are income, employment, housing and many other domains, including subjective questions on health and the financial situation that allow for a description of the living conditions of persons in private households.

EU-SILC is the main data source of the social inclusion indicators that were passed by the European Council and are meant to measure poverty and social exclusion. Until 2010, the goals set by the European Council in Lisbon (2000) aimed at alleviating poverty, helping to better understand poverty and social exclusion in the European context and supporting exchange of experience between member states in this context. Subsequently to this so-called Lisbon strategy in 2010 the new strategy “Europe 2020” was set out. It aims at lifting at least 20 million people in the EU out of risk of poverty or social exclusion by the year 2020. Additionally to its political significance, EU-SILC is one of the most frequently requested data sources for research projects in the social sciences on national and international level.

Since 2005 EU-SILC also contains ad-hoc modules on a yearly basis that cover special topics concerning certain domains of living conditions. In 2020 additional questions on indebtedness, consumption, wealth and employment were asked.

EU-SILC in Austria was carried out by Statistics Austria for the first time as a cross-sectional survey in 2003. From 2004 onwards EU-SILC has been implemented as an integrated cross-sectional and longitudinal design with four rotating panels that are surveyed for four years each. This means each year one rotational panel leaves the survey and the first wave of a newly selected sample which is drawn from the central residence register (Zentrales Melderegister – ZMR) is started. In 2020, the response rate of the newly selected first wave amounted to 48,6% of eligible addresses in the gross sample drawn from the ZMR. This was a slightly higher response rate than the one of the previous survey year 2019 (45.2%). The response rate of the follow-up waves (i.e. rotations not surveyed for the first time) was 84,6%. In 2020 the net sample contained 12,247 persons (where 1,865 persons were younger than 16 years) living in 6,021 households.

For EU-SILC all persons aged 16 or above in the selected households are interviewed personally. Participation is voluntary and carried out by CAPI (Computer Assisted Personal Interviewing) or CATI (Computer Assisted Telephone Interviewing) technique. Additionally, substantial information about children (younger than 16 years old) is surveyed.

The legal basis of EU-SILC are EU-regulations and a national regulation on income and living conditions (Einkommens- und Lebensbedingungen-Statistikverordnung – ELStV) of the Federal Ministry of Labour, Social Affairs and Consumer Protection (Bundesministerium für Arbeit, Soziales und Konsumentenschutz – BMASK)¹. On EU-level, EU-SILC is administered by a framework regulation², five implementing regulations of the European Commission and regulations for the yearly modules. EU legislation regulates basic standards such as minimum sample requirements, target variables, definitions and quality reporting. The national regulation administers amongst other things the implementation of the survey and the possibility of linking survey data with administrative registers. As was the case for previous years, the essential components of the household income of EU-SILC 2020 (income reference period 2019) are calculated using income data from administrative registers. About 87% of the volume of the total household income is gathered in this manner.

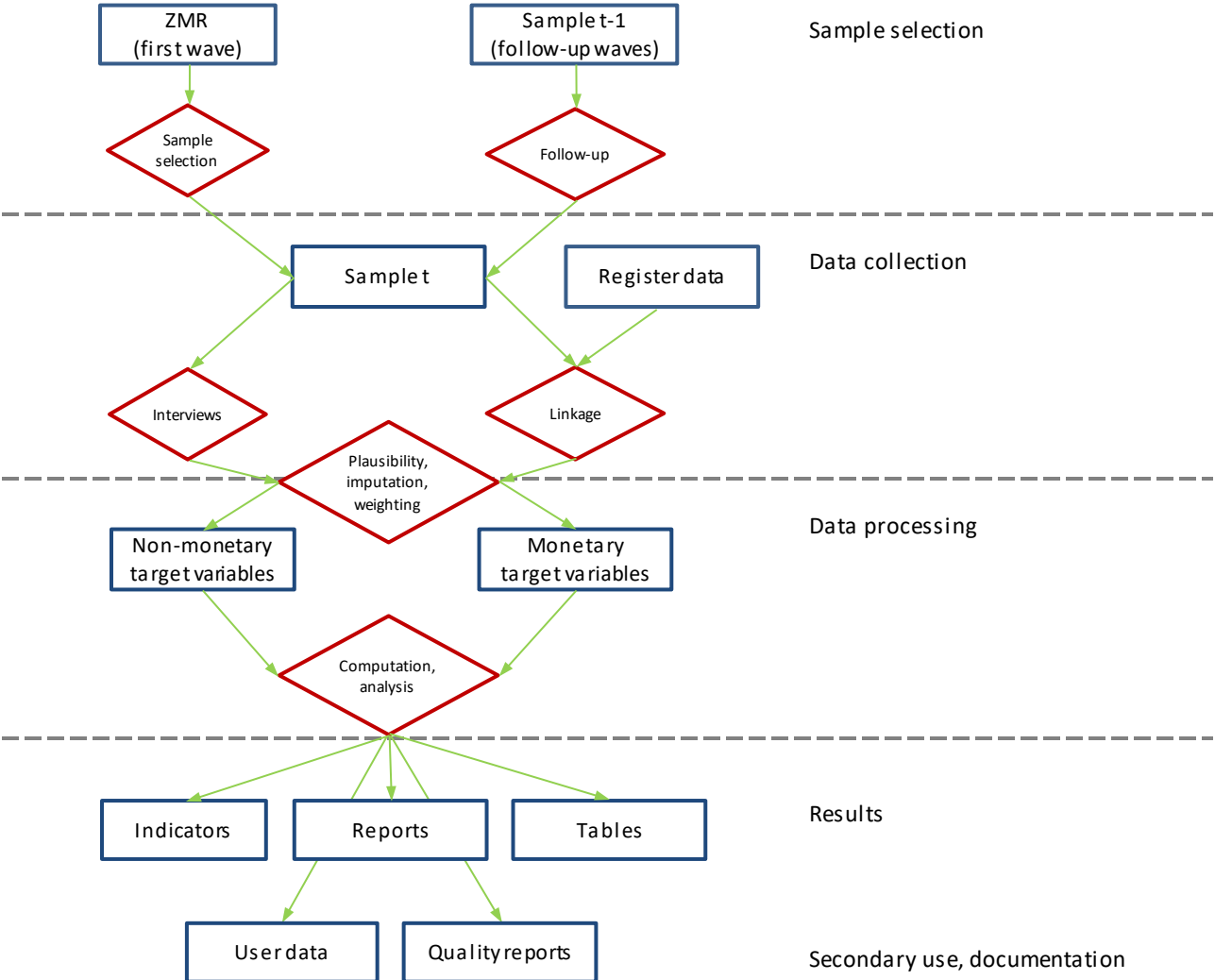
¹ Verordnung des Bundesministers für Arbeit, Soziales und Konsumentenschutz über die Statistik der Einkommen und Lebensbedingungen, BGBl. II Nr. 277/2010.

² Regulation (EC) No 1177/2003 of the European Parliament and of the Council of June 2003 concerning community statistics on income and living conditions (EU-SILC).

The main results of EU-SILC are published each year on the website of Statistics Austria. Anonymised micro data of the Austrian datasets are made available without charge for scientific use. A European user data-base containing all participating countries is disseminated by Eurostat.

Figure 1 presents the data production process of EU-SILC starting with the selection of the sample and ending with the availability of the results of a survey year.

Figure 1: Data production process of EU-SILC



EU-SILC 2020 – Main Features	
Subject Matter	Survey of household income and living conditions based on Eurostat guidelines
Population	Persons living in private households in Austria
Type of statistics	Primary statistical survey (CAPI- and CATI-Interviews) including data from administrative registers
Data sources/Survey techniques	Sample survey of 6,021 households CAPI- and CATI-Interviews carried out by the survey infrastructure of Statistics Austria; integrated cross-sectional and longitudinal survey
Reference period or due day	2020, income reference period: 2019
Periodicity	Annual
Survey participation (in case of a survey)	Voluntary
Main legal acts	Regulation of the European Parliament and of the Council EU VO (EG) Nr. 1177/2003 , five implementing regulations of the European Commission and regulations for the yearly modules. Regulation of the Federal Ministry of Labour, Social Affairs and Consumer Protection (Bundesministerium für Arbeit, Soziales und Konsumentenschutz) about the statistics on income and living conditions (Einkommens- und Lebensbedingungen-Statistikverordnung – ELStV) BGBl. II Nr 277/2010
Most detailed regional breakdown	Austria – with limitations Austrian provinces (NUTS2)
Availability of results	Final results: Survey year t + 5 months
Other	EU-SILC is the basis of indicators of the Europe 2020 strategy against poverty and social exclusion. EU-SILC is the basis of national indicators of social inclusion.